



5° Conferenza Nazionale sulla Chimica Sostenibile

Approccio all'Open Innovation nell'Industria Chimica: esperienze e opportunità

Gianluca Fincato, MD
Oncology Medical Director
Novartis Farma S.p.A.

Milano, 30 Gennaio 2018



Use of This Slide Deck

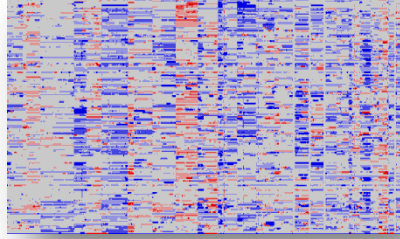
This material, and all contents cited within, is intended to provide free medical information for physicians. The objective is to share scientific data allowing each HCP to draw autonomous conclusions and make autonomous decisions from the material provided.

The scientific information may include data/information on investigational uses of compounds/drugs that have not been approved by regulatory authorities. Efficacy and safety have not been established. There is no guarantee these compounds will become commercially available.

This material may contain recommendations outside the approved labeling of Novartis products, but it is not intended to promote or recommend any indication, dosage, regimen or any claim not covered in the licensed product information (SPC).

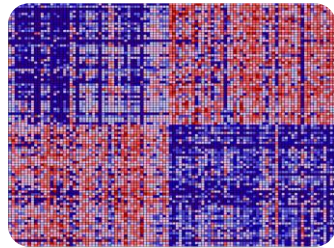
The Cancer Cell Line Encyclopedia: Informing patient selection

Gene
Amplifications
and Deletions

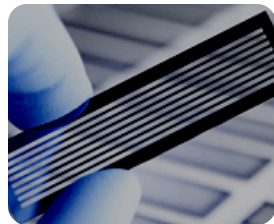


- 1000 cell lines
- Representation driven by unmet medical need
- 1300 compounds profiled against 500 cell lines

Gene
Expression



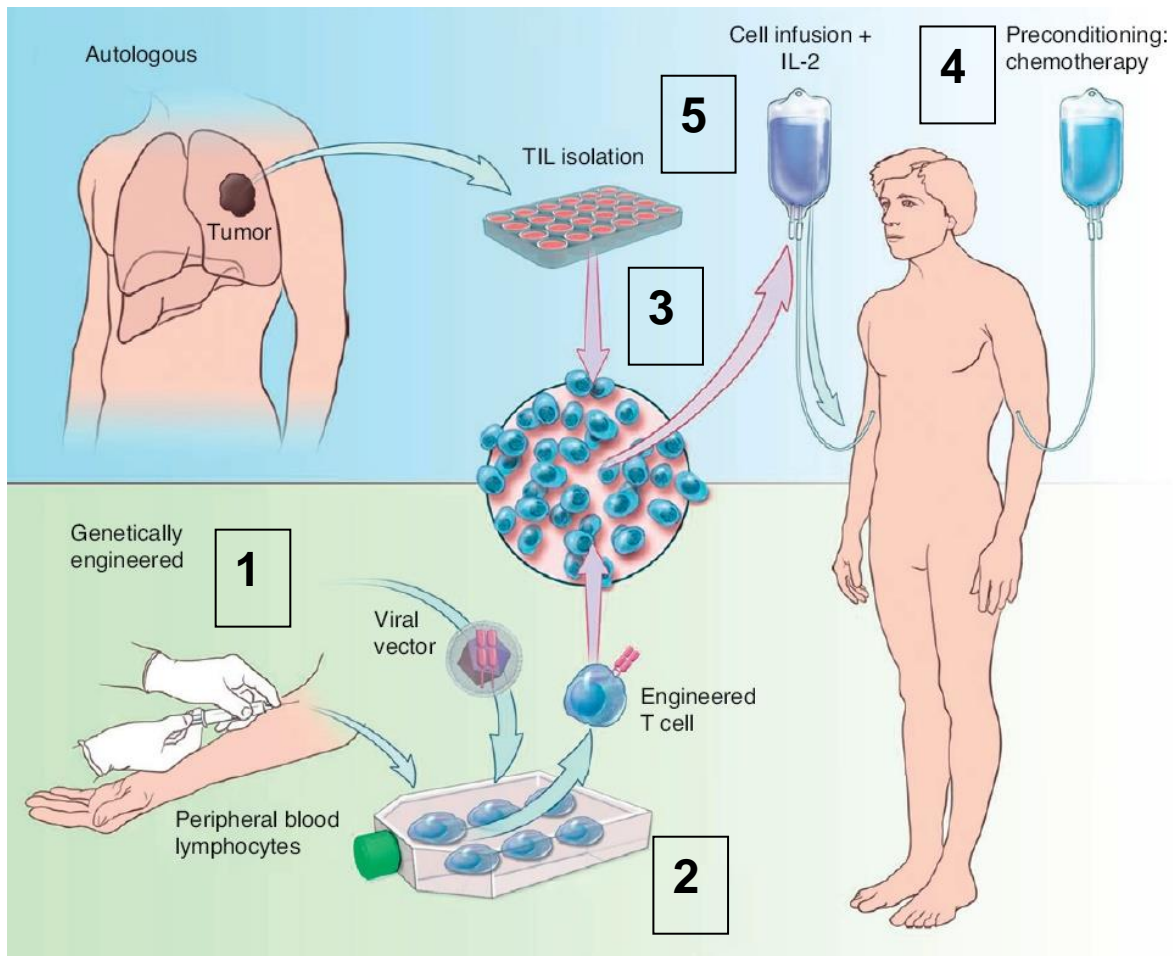
Gene Sequence:
Mutations and
Translocations



Public data release of genetic
profiling data 1Q2011

Review of the technology

Clinical application of CART cells



- 1. Blood draw / Leukapheresis:** White blood cells including T cells are separated from the patient's blood (leukapheresis)
- 2. Viral vector:** Genes encoded to recognise cancer cells are transferred into the patient's T cells using an inactive virus called a viral vector
- 3. Modified T cell** The modified T cells are grown in the laboratory
- 4. Chemotherapy:** The patient receives chemotherapy to reduce the level of white blood cells and help the body accept the modified T cells
- 5. T-cell infusion:** The modified T cells are re-infused into the patient's blood, where they seek cancers cells and destroy them

Il nostro approccio

Dal prodotto alla patologia a supporto dei pazienti

Dal prodotto alla patologia in partnership con le società scientifiche

Ematologia

- Forte partnership con GIMEMA a livello nazionale
- Sviluppo di una solida rete per la diagnostica integrata

labnet
Network tra laboratori
di biologia molecolare

labnet
Network tra laboratori
di biologia molecolare LMA

JAKnet



Rare Tumors / Diseases

- Grande focus sulla diagnostica attraverso reti di anatomo-patologi



Understanding
Liquid
Biopsy

Next Generation
Sequencing

NOVARTIS

Ex.: Diagnosi e monitoraggio pazienti con CML

Come funziona?

- 1) Il centro spedisce il campione
- 2) Il lab analizza con tecniche standardizzate
- 3) Il centro visualizza il risultato
- 4) Il lab spedisce al centro il risultato dell'analisi



**Totale Laboratori
standardizzati: 54**
Tot centri afferenti: 164



Sviluppo del labnet in ematologia: una rete complessa a supporto del SSN

CML

AML

MF,PV

MDS

Could digital technology drive clinical research in Africa?

MAR 29, 2017

https://www.nibr.com/stories/nerd-blog/could-digital-technology-drive-clinical-research-africa?utm_source=Twitter&utm_campaign=Could-Digital-Tech&utm_medium=Social-NIBR&utm_content=Could-Digital-Tech-1&hootPostID=8a477f30769fdea59ef8193919f7d561



ORIGINAL ARTICLE

Open-source mobile digital platform for clinical trial data collection in low-resource settings

Joris van Dam,¹ Kevin Omondi Onyango,² Brian Midamba,² Nele Groosman,³ Norman Hooper,³ Jonathan Spector,¹ Goonaseelan (Colin) Pillai,⁴ Bernhards Ogutu²

<http://innovations.bmj.com/content/early/2017/01/06/bmjinnov-2016-000164.full>